



D-Met

Upper Air Sounding Software

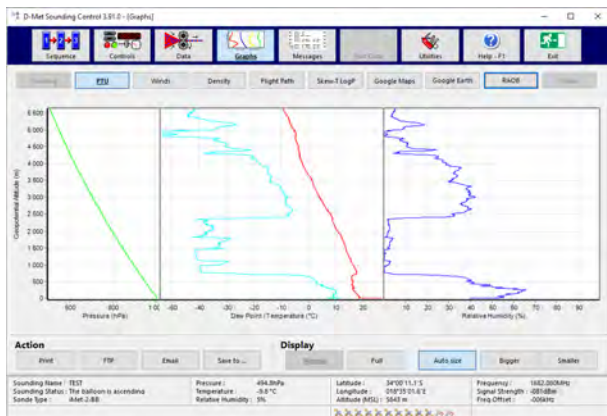
Graphs

- Pressure temperature, humidity
- Wind speed and direction
- Skew-T log-P
- Balloon ground track

Graphs available from launch

Interfaces with Google Earth and RAOB

Display, save, print, distribute, e-mail



D-Met PTU Graphs

Utilities

- Data management and distribution
- Access control
- Help and manuals accessible from within software
- Archiving

D-Met is a Windows PC-based software package that may be used with any of the InterMet Africa radiosondes and antennas for detailed upper-air observation recording and management. It assists the user in preparation, execution and reporting on soundings. The package offers a wide range of graphs and reports.

Specifications subject to change without notice

Reports / Messages

PTU, Winds and Ozone Reports/Messages:

- FM 35-XI Ext. TEMP
- FM 36-XI Ext. TEMP SHIP
- FM 38-XI Ext. TEMP MOBIL
- FM 32-XI Ext. PILOT
- FM 33-XI Ext. PILOT SHIP
- FM 34-XI Ext. PILOT MOBIL
- FM 94 BUFR 3 09 050, 3 09 051, 3 09 052, 3 09 055 (incl. high temporal resolution)
- MET B2 STANAG 4061
- MET B3 STANAG 4061
- MET CM STANAG 4082
- MET TA STANAG 4140
- MET FM STANAG 2103
- METEO 11

Significant, standard levels, time and altitude messages:

- Time (UTC, local and elapsed time since launch)
- Altitude (geometric and geopotential heights)
- Position
- Wind speed and direction
- Pressure, temperature, relative humidity
- Dew point, dew point depression, frost point
- Ascent rate
- Air density, virtual temperature, mixing ratios and other meteorological parameters
- Ozone report
- Metadata

Each type is fully configurable

Available from launch

Automatic distribution via email, FTP or serial

Key Features

- Intuitive operation require minimal system training
- Simple flow of operation
- Highly configurable to meet all user requirements
- Clear display of sounding data in a range of formats
- Real-time data processing
- Wide range of standard and configurable reports and messages
- Per-second data
- Ozone sonde supported
- Built-in tests
- Data distribution via a variety of interfaces



33 Estmil Road, Diep River, 7800,
Cape Town, South Africa
Phone: +2721 715 1120
email: info@intermetafrica.com
www.intermetafrica.com